

FOR SALE  
SUBDIVISION

# Walnut Creek Phase II

15.79 Acres parcel between NW 39th Avenue and NW 31st Avenue (Glen Springs Avenue)



**Blake Fletcher, REALTOR®**  
Commercial and Land Division  
(352) 538-1982  
BlakeFletcher@BosshardtRealty.com



**Main Office**  
5542 NW 43rd Street  
Gainesville, FL  
(352) 371-6100

FOR SALE  
SUBDIVISION

# Walnut Creek Phase II

15.79 Acres parcel between NW 39th Avenue and NW 31st Avenue (Glen Springs Avenue)



Tax Parcel 06091-002-003

Land 15.79 Acres

# of Lots 55

Lot Size 0.10 Acres

School Districts

Glen Springs

Westwood Middle

Gainesville High School

Price \$995,000

Price/Lot \$18,090

Price/Acre \$63,015

(examples of existing Walnut Creek homes, below)



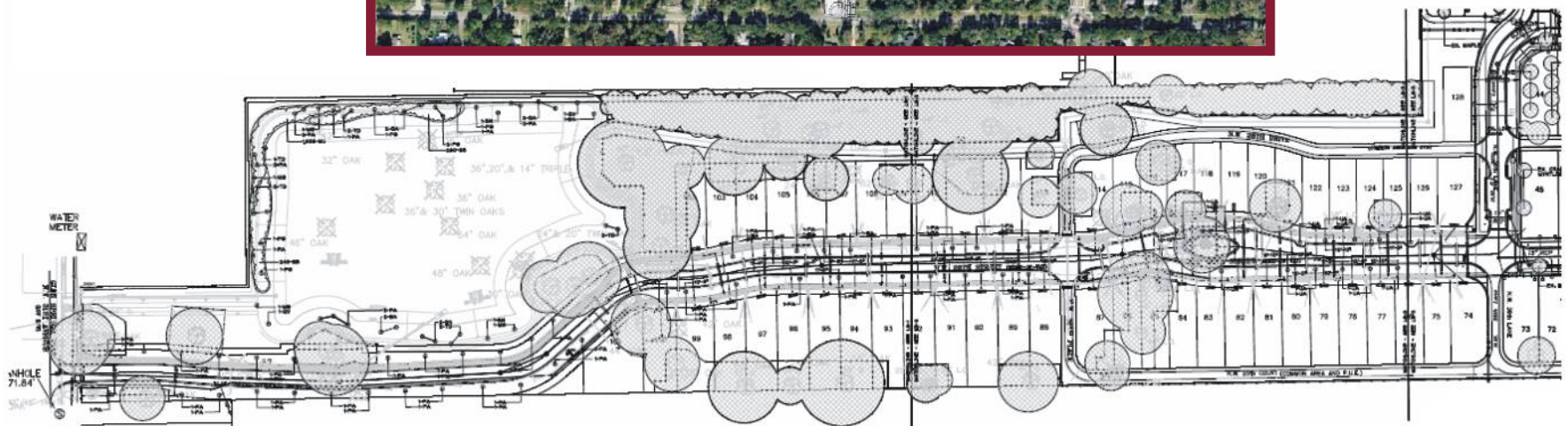
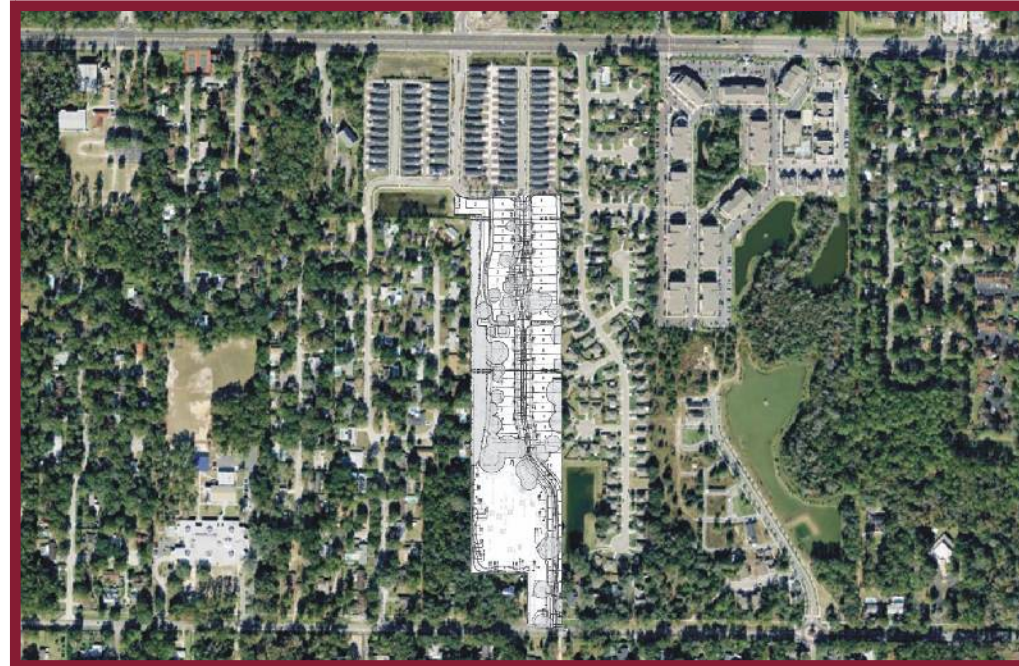
**Blake Fletcher, REALTOR®**  
 Commercial and Land Division  
 (352) 538-1982  
 BlakeFletcher@BosshardtRealty.com



**Main Office**  
 5542 NW 43rd Street  
 Gainesville, FL  
 (352) 371-6100

# Walnut Creek Phase II

15.79 Acres parcel between NW 39th Avenue and NW 31st Avenue (Glen Springs Avenue)



FOR SALE  
SUBDIVISION

**Blake Fletcher, REALTOR®**  
Commercial and Land Division  
(352) 538-1982  
BlakeFletcher@BosshardtRealty.com



**Main Office**  
5542 NW 43rd Street  
Gainesville, FL  
(352) 371-6100